



TOP NEWS

- Deutsche Bank:** In Stall Speed
- DFDL:** Here Comes the Sun
- Interview:** Giovanni Dante Salce
- Swiss School:** Football Friendly Matches
- Contribution:** Kurt Wüthrich

SUPPORTED BY



THE SWISS AMBASSADOR'S MESSAGE

DEAR FRIENDS AND MEMBERS OF THE STCC



**CHRISTINE SCHRANER BURGNER
AMBASSADOR OF SWITZERLAND TO
THE KINGDOM OF THAILAND**

For once, the STCC Board asked me to provide an introductory message. While Thailand is going through a difficult phase, finding the right words is challenging.

If I am looking back, on a positive note, I would like to underline how well the bilateral economic ties between Thailand and Switzerland had developed throughout 2013: Switzerland is Thailand's 6th most important trading partner on Swiss exports to Thailand.

Our country takes pole position among non-Asian countries. With goods worth USD 9,2 billion in 2013, Switzerland exported more to Thailand than countries like South Korea, Singapore, Indonesia, Germany or India. The total volume of bilateral trade amounted to USD 10,7 billion. Swiss machinery, precision instruments, watches, pharmaceutical and chemical products remain popular here. Also, on Foreign Direct Investments (FDI), Switzerland takes an eminent position. In 2013, Switzerland advanced from the 10th to the 7th rank. The 150 Swiss companies located here do employ over 55'000 workers. The Swiss have a distinct passion for Thailand – not only for economic reasons. In 2013, 199'923 Swiss tourists visited Thailand marking an increase of 4.6 percent towards 2012. Thailand reciprocated its affection for Switzerland by increasing the number of Thai visitors to Switzerland by 27 percent (!), amounting to 71'134 travelers.

SERVICE

STCC CALENDAR

- Tuesday, 3rd June 2014:** Joint Event with German-TCC: Economic Outlook 2015; 11:00 Kempinski Hotel
- Tuesday, 3rd–5th June 2014:** Kafka Festival @ Goethe Institute; Opening Ceremony 18:00
- Thursday, 12th June 2014:** STCC- Stamm, AMARI Boulevard Hotel, Sukhumvit Soi 5
- Friday, 13th June 2014:** SwissSchool Graduation Ceremony, @RIS Minburi, 10–12hrs
- Thursday, 19th June 2014:** VOLVO Truck Factory Visit with BeluThai Chamber, start 07:45
- Sunday 22nd June 2014:** SWISSRail Business Brunch in Mandarin Oriental @ 13:00
- Thursday, 10th July 2014:** STCC- Stamm, AMARI Boulevard Hotel, Sukhumvit Soi 5

*More details at
www.swissthai.com*



Swiss Thai



JUNE 2014 | SWISS-THAI CHAMBER OF COMMERCE | E-NEWSLETTER #47

STCC PRESIDENTS MESSAGE

However, economic forecasts for the current year have been grim. Most worrying in this regard in my view is the fact that the current situation is likely to affect the FDI performance of Thailand's most important investors – Japan, the USA and the UK – adding to the overall dampened investment climate. The statistics for 2014 are very likely to look different from the ones of 2013.

But I cannot talk today about economic relations without expressing my concerns with regard to the actual political situation. The Swiss government made a statement a day after the coup, demanding the military forces to respect the rule of law and allow the return to power of a democratically elected government. Economic rights and economic well-being are closely interlinked with civil, political, social and cultural rights. International relations

cannot be reduced to national economic interest; all human rights play a significant role. The history has shown that successful economic and social development is not sustainable in a suppressed society. All human rights are based on principles of dignity and freedom. Therefore, my sincere wish for Thailand is that full freedoms, social equality, the rule of law and a democracy that can work for all Thais can be established as soon as possible.

Yours sincerely,
Christine Schraner Burgener
 AMBASSADOR OF SWITZERLAND
 TO THE KINGDOM OF THAILAND

Contact the president:
Luzi A. Matzig
 (Lersan Misitsakul)
 President STCC
 president@swissthai.com
 Tel. +66 (0) 2626 2121

SUPPORTED BY



SERVICE

MEMBER DETAIL UPDATES

Do you have changes among your delegates or changes to your e-mail, mobile, telephone, or fax numbers?

Please send all updates to secretary@swissthai.com



ECONOMY REPORT BY DEUTSCHE BANK

IN STALL SPEED

- *Economic outlook: High frequency data suggest that the economy may well have contracted in the first quarter, which has prompted us to revise the 2014 GDP growth forecast down to 2.5%.*
- *Main risks: The political situation continues to loom large as a major drag to consumption and investment. The risk is things could get worse this summer as yet another election is planned, opposition to the timing of which has already been vocalized by the opposition.*

The 2.45% inflation print for April (core inflation: 1.7%) was not surprising. Inflation can remain subdued for only so long even in the presence of weak demand as supply side factors

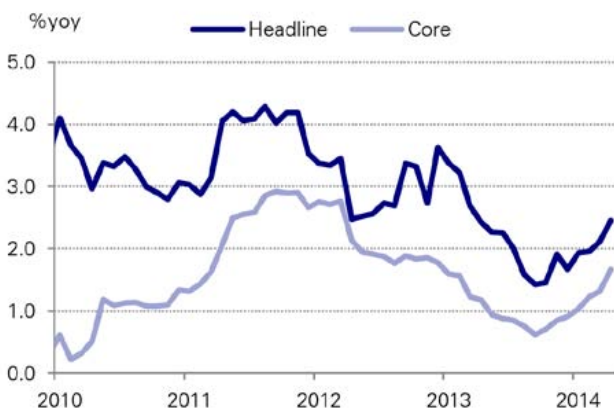
tend to come into play eventually. Prepared food price inflation (5.1%yoy in April vs. 3.7% in March) was the main contributor to the pick-up in CPI, but we see conditions in place for further inflation in the coming months. Weaker baht, firming fuel prices, and concerns about El Nino affecting food production, can all contribute to inflation heading past 3% in the next few months.

While inflation has bottomed, it's not clear if the economy has troughed. In its recently published report on economic and monetary conditions, the Bank of Thailand saw conditions weakening in March vis-à-vis February, with both external and domestic demand subdued. Although there was little to be concerned about on the em-

ployment or the BOP front, and auto and electronics exports, along with tourism, seemed to be turning a corner, indices of private consumption and investment remained in contraction territory. Indeed, weak growth momentum may diffuse some of the inflationary risks later this year.

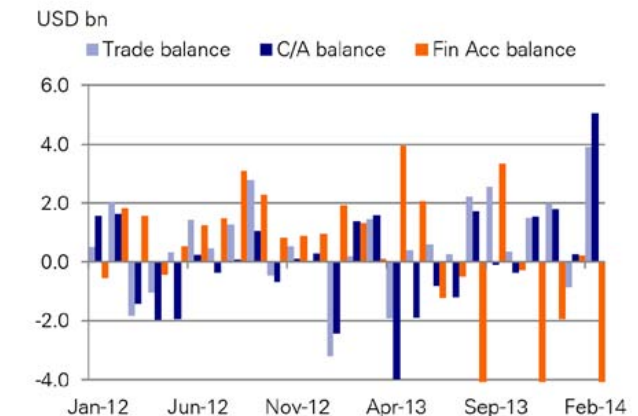
Clearly the ongoing political conflict continues to weigh heavily on expectations and outlook. There is also little support from fiscal as disbursement has lagged considerably due to the political situation and adverse judicial ruling on various public sector activities. The outlook for the economy relies heavily on the political situation, but there is some room for optimism for the second quarter as exports and tourism

Inflation has bottomed and could continue to climb through the summer



Source: CEIC, Deutsche Bank

Trade balance has improved on weak imports



Source: CEIC, Deutsche Bank



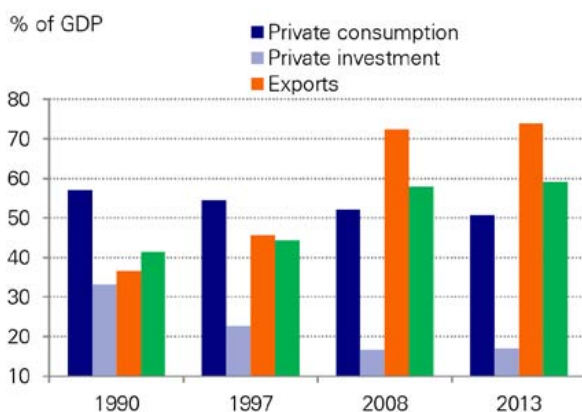
ECONOMY REPORT BY DEUTSCHE BANK

are likely to pick up. Q1, however, looks like a wash. Indeed, we think that Thailand's economy likely contracted in Q1, continuing on a path of weakness that has been charted for nearly a year. The index of value-added production declined by 10.6%yoy in March, which was the twelfth consecutive month of contraction of the series; the index of capacity utilization was down 9.8%yoy at the same period while the index of shipment was down 13.1%yoy; electricity generation was down 6.8%yoy through February.

Measures gauging consumer and investor sentiment were also down sharply. Based on this data-flow indicating very weak domestic demand, and poor exports data through March, we estimate that the economy contracted by 1.5%yoy in Q1. Based on this, we have revised down the 2014 annual average growth forecast to 2.5%. Lower economic growth will be driven by weak consumption and investment; even trade will likely be anemic in the first half of the year.

Risk of weak growth external accounts may be mitigated though as weak exports and imports go hand-in-hand. Three key factors have driven the weak Thai economic performance, in our view. First, with the expiration of various one-off supporting measures (car buying scheme, rice

Components of GDP



Source: Deutsche Bank

Thailand: Deutsche Bank Forecasts

	2012	2013	2014F	2015F
National Income				
Nominal GDP (USDbn)	370.5	367.6	388.0	393.6
Population (m)	64.5	64.8	65.1	65.4
GDP per capita (USD)	5749	5675	5961	6016
Real GDP (yoy %)				
Private consumption	6.5	2.9	2.5	4.0
Government consumption	6.7	0.2	0.1	3.5
Gross fixed investment	7.5	4.9	0.5	2.0
Exports	13.2	-1.9	-0.8	6.0
Imports	3.1	4.2	2.0	11.3
	6.3	2.3	1.2	12.9
Prices, Money and Banking				
CPI (yoy %) eop	3.6	1.7	1.8	3.0
CPI (yoy %) ann avg	3.0	2.2	2.4	2.2
Core CPI (yoy %) ann avg	2.1	1.0	1.8	1.4
Broad money	10.4	7.3	7.5	8.0
Bank credit ¹ (yoy %)	15.3	9.4	9.0	10.0
Fiscal Accounts² (% of GDP)				
Central government surplus	-3.5	-3.0	-3.2	-3.3
Government revenue	19.2	18.8	19.0	19.0
Government expenditure	22.7	21.8	22.2	22.3
Primary surplus	-3.6	-3.1	-1.9	-2.0
External Accounts (USDbn)				
Merchandise exports	225.9	225.4	246.7	270.8
Merchandise imports	219.9	219.0	238.8	267.6
Trade balance	6.0	6.4	7.9	3.1
% of GDP	1.6	1.7	2.0	0.8
Current account balance	0.2	0.5	4.0	1.1
% of GDP	0.0	0.1	1.0	0.3
FDI (net)	-2.0	-3.0	-3.0	2.8
FX reserves (USDbn)	181.6	186.1	193.1	199.2
FX rate (eop) THB/USD	30.7	32.4	32.0	32.5
Debt Indicators (% of GDP)				
Government debt ^{2,3}	43.7	45.5	46.0	46.5
Domestic	41.5	43.6	45.0	45.5
External	2.2	1.9	1.0	1.0
Total external debt	35.3	36.3	34.6	34.4
in USDbn	130.7	135.0	140.0	145.0
Short-term (% of total)	44.5	45.0	45.0	45.5
General				
Industrial production (yoy %)	2.5	2.6	4.0	5.0
Unemployment (%)	0.8	0.8	0.7	1.0
Financial Markets				
	<i>Current</i>	<i>3M</i>	<i>6M</i>	<i>12M</i>
BoT o/n repo rate	2.00	2.00	2.00	2.00
3-month Bibor	2.20	2.25	2.40	2.60
10-year yield (%)	3.61	3.55	3.70	4.00
THB/USD (onshore)	32.4	32.5	32.7	32.0

Source: CEIC, Deutsche Bank Global Markets Research, National Sources

Note: (1) Credit to the private sector & SOEs. (2) Consolidated central government accounts; fiscal year ending September. (3) excludes unguaranteed SOE debt



Swiss Thai



JUNE 2014 | SWISS-THAI CHAMBER OF COMMERCE | E-NEWSLETTER #47

ECONOMY REPORT BY DEUTSCHE BANK



pledging scheme, and post-flood reconstruction), and the rise in household debt (nearly 80% of GDP), some fatigue in the economy was inevitable. Second, the ongoing political uncertainty has caused delays and cancellations in consumption and investment decisions and soured external investor sentiments. Third, exports have disappointed so far this year, unlike the performance of Thailand's peers in the region (i.e. Malaysia, the Philippines, and Singapore), with key export items such as agriculture and electronics products still in negative growth territory.

Looking ahead, the external sector remains a major potential source of support. Exports could bottom with a rise in partner country demand, especially China and EU. Regionally, auto demand is already

showing signs of a turnaround. Note that over the past couple of decades Thailand's economy has become increasingly more reliant on trade (see chart below), with trade share of GDP far exceeding that of consumption or investment. Since we remain confident of a pick-up in global demand, we still see a growth rebound despite a poor first quarter and lingering political risk.

The other area of positive development could be tourism. If the political situation does not worsen, the summer season could see a spike in arrivals and hotel occupancy, giving the economy a rare respite. We understand that visitor arrivals picked up in later April and early May.

*Taimur Baig,
Singapore,
+65 6423 8681*



GLOBAL HD TV



**Europäisches Fernsehen
in Thailand empfangen!**

Global HDTV bietet aktuell 45 deutsche, österreichische und schweizerische Kanäle an, 10 davon in zweifacher Qualität, einmal in HD (High Definition) und in bewährter standard Qualität, weitere 8 Sender sowohl in HQ (High Quality) als auch in standard Qualität. Dreingabe: 13 britische Kanäle im HQ - Format !
Nur THB 990.- / Monat + Rabatte ! www.globaltv.to support@globaltv.to



NEWS BY DFDL

HERE COMES THE SUN

Solar power is an extremely popular concept these days; interestingly humans have been harnessing the power of the sun since the 7th century B.C to light torches. Swiss scientist Horace de Saussure is credited as building the world's first solar collector, which would serve as a precursor to solar cookers. In more recent years solar energy is being used to generate electricity using the photovoltaic process; it is this method that is still used today to harness the energy derived from the source of all life, the sun.

Measuring solar irradiance levels (the measure of electromagnetic radiation produced by the sun which is perceived as sunlight) proves as an effective way to determine the solar energy generating capacity of a

country. As expected, Thailand has an enormous solar power generation potential with solar irradiance levels ranging between 1700-2100 kWh/m²/year. These figures can be compared to Switzerland which has solar irradiance levels ranging from 800 -1400 kWh/m²/year.

Thailand, since the early 2000's has put forth several ambitious renewable energy promotion policies. The most recent being the Department of Alternative Energy Development and Efficiency's "Alternative Energy Development Plan 2012 - 2021" ("AEDP"). The AEDP aims to reduce Thailand's dependence on fossil fuels by having renewable energy provide 25% of Thailand's total energy generation by 2021.

The current target for solar energy under the AEDP is to increase generation, by 2021, to 2,500 megawatts ("MW"). Solar power currently generates power only in the amount of 448 MW. Presently, almost all of Thailand's solar power is generated by solar farms that are over one MW in capacity such as the Lopburi Solar Plant in central Thailand, with only 1% coming from industrial rooftops and/or residential sources. The AEDP understands the importance of both large and small scale solar generators and as such introduced one of the key pillars of its plan; the Solar Photovoltaic (PV) Rooftop Programme.

The Solar Photovoltaic ("PV") Rooftop Programme is aimed at encouraging domestic and commercial buildings to install

 **asian trails**

Let us guide you throughout Asia

COME EXPLORE WITH US.

CAMBODIA · res@asiantrails.com.kh
 CHINA · res@asiantrailschina.com
 INDONESIA · res@asiantrails.co.id
 LAOS · res@asiantrails.com
 MALAYSIA · res@asiantrails.com.my
 MYANMAR · res@asiantrails.com.mm
 THAILAND · res@asiantrails.org
 VIETNAM · vietnam@asiantrails.com.vn

WWW.ASIANTRAILS.TRAVEL





Swiss Thai



JUNE 2014 | SWISS-THAI CHAMBER OF COMMERCE | E-NEWSLETTER #47

NEWS BY DFDL

PV systems on their rooftops with the intent of generating electricity which can be either self-consumed and/or sold to the government via entities such as the Provincial Electricity Authority (“PEA”) or the Metropolitan Electricity Authority (“MEA”) under the Energy Regulatory Commission’s Rules and Regulations on Thailand’s Solar PV Rooftop Programme. These regulations outline the various rules for determining the eligibility of participants, sale processes and the method for calculating remuneration, and mandate use of a standardized Power Purchase Agreement to be entered into between the proposed generator and either the PEA or MEA.

One impediment to the implementation of the Solar PV Rooftop Programme has been the quagmire of licensing and permit requirements. Those wishing to install solar panel systems with generating capacities be-

low 3.85 KW on their residential homes in Thailand for private, off-the-grid consumption may do so without fulfilling any licensing and permit requirements. The problem arises when such systems are connected to the grid and have a generating capacity of in excess of 3.85 KW. To be eligible for (i) electricity generation in excess of 3.85 KW, and (ii) grid-connection, a Factory License issued by the Department of Industrial Works and a Permit to Alter Residential Buildings issued by the Civil Works Department are required in addition to entering into a standardized power purchase agreement.

Unfortunately, since October 2013, the MEA have stopped accepting applications to sell power generated by participation into the Solar Photovoltaic (PV) Rooftop Programme. Based on the effectiveness of the current grid connected systems and subject to when the polit-

ical situation is at ease, applications may be reopened in the coming months.

In regard to the relevant licenses and permits, on 25 March 2014 the Energy Regulatory Commission (“ERC”) issued an announcement which ruled that the generation of electricity under the Solar PV Rooftop Programme did not constitute a power plant factory. Since the issuance of the announcement there has been an a debate between which governmental authority has the power to issue such a notification, there issue has be referred to the Office of the Attorney-General so as to determine which agency has authority to issue such an announcement.

Nevertheless solar energy development remains an exciting industry which will be heavily promoted by the Thai government until the AEDP targets are met. This is facilitated by the

www.venturiasia.com

- M&E WORKS
- ENGINEERING
- CLEAN ROOMS
- FILTRATION PLANT
- AIR CONDITIONING
- TURNKEY FACTORY
- ACOUSTIC CONTROL
- EVAPORATIVE COOLING
- ODOOR/SMELL REMOVAL
- ENVIRONMENTAL CONTROL
- TEXTILE AIR CONDITIONING
- DUST COLLECTION SYSTEM
- DEHUMIDIFICATION SYSTEM
- INDUSTRIAL AIR TREATMENTS
- BUILDING AUTOMATION SYSTEM

VENTURY
YOUR TURNKEY FACTORY

ELBARON
ELECTROSTATIC AIR CLEANER FOR OIL MIST

((P)) Premier International Co.,Ltd.

We fabricate P.T.F.E. Coated Glass Fabric Material into different kind of belts for many Industries

We produce textile dryer belts, packaging belts, processing belts, backing sheets, silicone sheets and tapes according to customer specification

Contact us: Tel:0-2935-9023 to 5 Fax: 0-2539-1743, 0-2935-9023 E-mail: premier_admin@csloxinfo.com
Website: www.premier-beltting.com, www.premier-belts.com



Swiss Thai



JUNE 2014 | SWISS-THAI CHAMBER OF COMMERCE | E-NEWSLETTER #47

NEWS BY DFDL

decreasing manufacturing costs for solar PV cell technology which are making solar energy an increasingly viable option for smaller scale and domestic use; as such strong supporters and advocates of solar energy have not been hindered by the stringent licensing requirements for their future installations. Technological developments have also aided in the development of solar energy as there exists a variety of solar panels available for purchase such as foldable panels to save space, panels with higher efficiencies and panels created from semi-transparent organic nanotechnology. Despite the considerable potential for solar generation on a micro and macro level in Thailand,

it has yet to gain adequate traction due to its relatively high set-up costs and a lack of awareness among the general public. These issues have not barred the Swiss Embassy from launching its own initiatives to install a 150 KW solar generating set-up. We understand that several Swiss Embassies have also implemented this initiative globally.

Angus Mitchell
(angus.mitchell@dfdl.com)

Kunal Sachdev
(kunal@dfdl.com)

Matthew Christensen
(matthew.c@dfdl.com)

*For more information
please contact
thailand@dfdl.com*



599 THB NET
per person



EL BRUNCH

Mexican brunch buffet every Saturday
*****AUTHENTICITY AT ITS FINEST*****
KITCHEN THEATRICS + Bloody Mary Bar
+ Live Mariachi Music +
SPECIAL FOOD STATIONS & A PINATA FOR THE KIDS

TELEPHONE : 022617100
LOCATION : Señor Pico

REMBRANDT
HOTEL BANGKOK
Member of WARWICK





Swiss Thai



JUNE 2014 | SWISS-THAI CHAMBER OF COMMERCE | E-NEWSLETTER #47

MEMBER INTERVIEW

GIOVANNI DANTE SALCE

Name or Alias

Giovanni Dante Salce

and Christian 16 y/o, Living in the Ekamai area

Favorite destination in Thailand

Kao Tao Beach near Hua Hin

Occupation / Employer

M+R Forwarding (Thailand) Co., Ltd.

Years in Thailand

Arrived in 1999 from Jakarta, so since 15 years Bangkok

How do you spend your free time?

Youth Football coach and part time sausage maker...

Languages

German/Italian/English/French

Favorite restaurants in Thailand

Enoteca Italiana Bangkok. Nicolas and his team are the best. Thai: Sabai Jay Gayang, on Ekamai

Which book or movie would you recommend to your friends and why?

Games of Thrones by Georg R.R. Martin

Family & Home

Married to Mona mother of Luca, Marco 19 y/o, Yasmin 18 y/o



If you had a million dollars, how would you spend it?

Donate to "Cleft Children Relieve Foundation" www.cleft-children.org/en/Home.aspx

If you had the power to change something in Thailand, what would it be?

Better education system on all levels

TRINA
INTERNATIONAL

ONE STOP

Your reliable Partner
in Thailand

+ Swiss Management +
Since 1996

Business Consulting

Start up – Business Registrations – Visa & Work permits

Recruiting

Accounting Services

including VAT, Tax, year-end closings, reportings

Insurance Solutions

Medical Insurances (individual and staff / groups)
Car-, Bike- & Property Insurance
Life Insurances

TRINA Management (Thailand) Co. Ltd.

18th Floor, Unit 1802; Bangkok Business Center Building
#29, Sukhumvit 63 Road, Wattana, Bangkok 10110
Tel: 02 714 4177; Fax: 02 714 4179
trina@loxinfo.co.th www.trina-thai.com

Member of the Swiss & German Chamber of Commerce

+ Adhesive & Sealant Technologies +



ergo[®]

MS Hybrid Polymer
best performing
window, door
and facade
sealant.

Southeast Asia Link Co., Ltd.
www.seal-ast.com
T: 0 2732 2092



SWISS SCHOOL NEWS

CULTURAL FESTIVAL NEW DELHI

An illustrious delegation from the RIS Swiss Section – Deutschsprachige Schule Bangkok travelled to the Cultural Festival of the German-speaking schools in South-east Asia from March 13th to 17th 2014.



This year's venue for the festival was the German European School New Delhi in India with "Colours" as this year's topic. The chaperones were Liv Lange Rohrer and Alex Schillig. The participants selected one workshop from the ones offered which they attended on the four days in New Delhi. Furthermore, they could join

in yoga sessions, organised field trips as well as musical events there. As preparation for the trip and the cultural event in New Delhi the participants attended the school workshop led by Ms. Lange Rohrer and Mr. Schillig on Thursday afternoons in the

8th and 9th period, where they planned and worked on the Swiss School workshop as well as their own presentation on the topic "Colours". All participants left New Delhi enriched by many experiences and meaningful impressions.

ALOHA SPLASH

Aloha Splash is a fun event held and organized each year by our students' body SMV.

On Monday May 12th, 2014, the students of grades 2 - 11 enjoyed a day with all sorts of watery fun. The school was set up with different stations, each one supervised by a different teacher in charge of a particular game. This gave the students a variety of wet ways to get soaked and stay cool on the hot day. Of course, all the kids and teachers ended up with pretty wet heads and clothes! The superb planning from the student council included food as well. At the end of the school

day all students came together for a wonderful lunch buffet in the music room. There was also an extraordinary snack sale (Pausenbrotverkauf) organized by the PBV. Such a fun day at school! We are all looking forward to "Aloha Splash 2015"! Thanks to the hard work of the student council in throwing this party.



Important events

12.06.2014 Flea Market (11:10 – 12:45)

13.06.2014 Graduation Ceremony

14.06.2014 Matura Ball

Please visit our website www.swisschoolbangkok.org and get more information about our upcoming events.



SWISS SCHOOL NEWS

FOOTBALL FRIENDLY MATCHES

On April, 26th RIS Swiss Section – Deutschsprachige Schule hosted friendly football matches against three teams from Berkeley International School.

Enthusiasm, competition, and good fun were the name of the day, although the longer the matches lasted, the more the heat was starting to play a factor. The level of performance in all three matches was extremely high.

The kids from both schools showed massive improvement and the games were extremely competitive and showed great sportsmanship and determination on and off the court. The boys 11 years and under started the competition and the Swiss boys managed to win the match 2-0. The Berkeley boys 14 years and under were too strong for the Swiss team and the final score was 6-2. The girls presented a great match and both teams finally scored one goal.

REMATCHES

RIS Swiss Section – Deutschsprachige Schule Bangkok played the rematches against Berkeley International School and Anglo Singapore International School on May 17th at Berkeley International School. Expectations were high and more victories were in the offing. And the three teams of our school did not let the supporters down and were successful.

Here are the results: Berkeley Boys vs the Swiss U11: 2-1, Anglo Singapore International School vs the Swiss U11: 5-0, Berkeley Girls vs the Swiss U14 Girls: 1-2, Berkeley Boys vs the Swiss U14: 0-0, Anglo Singapore International School Boys vs the Swiss U14 Boys: 0-3

The supporters of both sides watched well played games with lots of action, goals, and excitement. Well done to all teams for effort, skills and fairplay!



บริษัท โนวาเท็ค จำกัด
NOVATECH

www.novatech.co.th

DO YOU HAVE THE RIGHT BUSINESS TOOLS?

- Website Development
- Internet-Based Business Solutions
- SEM, Digital & Traditional Marketing Solutions
- Web & Print Design



bitsiren
Bespoke IT and Marketing Solutions

Tel: +66 76 319 179 | www.bitsiren.com



MEMBER NEWS

SAMITVEJ SUKHUMVIT HOSPITAL AND STCC „HEALTHY DAY EVENT“

Nine STCC members have been welcomed on Friday 16th of May at the Samitivej Hospital by Nicolas Leloup, Head of International Marketing, and some photos have been taken by Erwin and the hospital's photograph.

The visit begun at the fitness centre of the hospital, it can be used not only by the patients but as well by the staff of the hospital – “mens sana in corpore sano” said the Romans! I was impressed to see such a perfectly equipped Fitness Room at a Hospital – it makes really sense!

We visited then a so called “intelligent” hospital room. The patient in this room is able to switch on the TV, to adjust and to open or close the curtains and so on, with remotes or an iPod. However the patient should be skilled enough to handle all the remotes. Mr. Nicolas told us that most of the hospital rooms will be upgraded to “intelligent” rooms. If I remember well, the cost for such a room is around 8’000 Baht per day.

At about 16.00 we went to the 6th floor, to the Bancha Lamsam



Auditorium. Some delicious snacks and refreshment with coffee, tea and sweet drinks (but of course no alcohol) were offered. Later on two doctors lectured about treatments against prostate cancer and fatty liver respectively drinking habits.

Doctor Isares Seisorn informed about a new possibility to cure prostate cancer. The treatment is called HIFU (High intensity focused ultrasound).

The advantages are evident:

- Less side effects compared to other treatments.
- Highly effective compared to alternative treatments.

- Good option for a first time treatment.
- Suitable for treatments of prostate cancer at several stages.
- No side effects from radio active elements.
- No surgical incision.
- Short recovery period compared to other treatments, the patients are required to stay only 1 – 3 days at the hospital.
- Immediate treatment result.
- The treatment can be repeated during the follow-up period.
- Applicable also for patients whose condition is not appropriate for major surgery.



MEMBER NEWS

This new treatment is not yet available in all countries, the apparatus cannot yet be bought, the hospital has to rent it. This treatment incl. a three day stay at the Hospital would cost between 400'000 – 500'000 Baht. However it might be good news for men with prostate problems.

The second presentation about "Social Drinking" by Dr. Nathavut Sirimontaporn advised about dangers of alcohol consumption. Men should not drink more than 2 - 3 glasses of wine per day (or equivalent in other kinds of drinks). Women may drink even less, it seems their

body has more problems with alcohol. Cirrhosis Livers look quite ugly, however the fat in the liver can be reduced with an appropriate diet program.

It seemed to me that the second theme found a little less interest by the auditorium. As I know, Switzerland is in matter of consuming Alcohol number 3 in the world, after Italy and France. But of course, the consumption of alcohol in Thailand is a big issue, especially the "Lhau Khaau"; this white alcohol causes not only liver cirrhosis but as well many accidents. The slogan "mau may kap", "do not drive when you drink alcohol", should really be observed!

Finally, the lucky draw presented 2 Members with vouchers for a Liver screening at a value of 4000 Baht each.

We thank the Management of the Samitivej Hospital for welcoming us at this event, the interesting presentations as well as the nice coulinary snacks and we all agreed that we would welcome an other similar event again for our members

*Markus Ruprecht, Bangkok;
081 985 69 42;
markus.ruprecht@yahoo.com*





Swiss Thai



JUNE 2014 | SWISS-THAI CHAMBER OF COMMERCE | E-NEWSLETTER #47

Swiss Thai

CHAMBER OF COMMERCE

29 Unit 1802 Bangkok Business Centre Bldg.
Sukhumvit 63 Road, Klongton Nua, Wattana
Bangkok 10110

Tel. +66 (0) 80 771 0270

Fax + 66 (0) 2 714 4179

E-mail: secretary@swissthai.com

Web page: www.swissthai.com

Bangkok, May 21, 2014

H.E. Christine Schraner Burgener
The Ambassador of Switzerland
Embassy of Switzerland
35 North Wireless Road
Bangkok 10330, Thailand

Dear Christine,

On behalf of the Swiss-Thai Chamber of Commerce it gives me great pleasure to congratulate you on having been chosen as the DEAN of the entire Diplomatic Corps in Thailand.

This is a great honor and Achievement which deserves due mention in our next Newsletter.

I thank you for your always great support of the STCC and wish you success.

Yours sincerely,

Swiss-Thai Chamber of Commerce

Luzi A. Matzig

(Lersan Misitsakul)

President

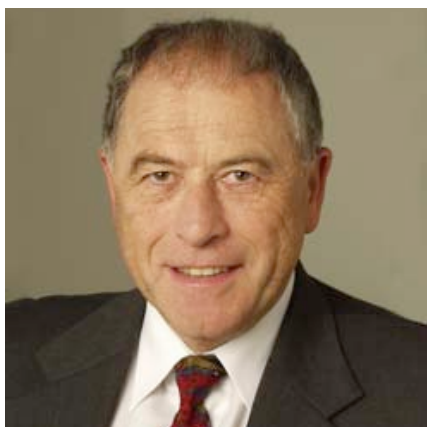
cc. Mr. Thomas Gerber / Executive Director of STCC

Mr. Bruno Odermatt / Vice-President of STCC



MEMBER CONTRIBUTION

EMERGING NATIONS, BASIC SCIENCE AND NOBEL PRIZES



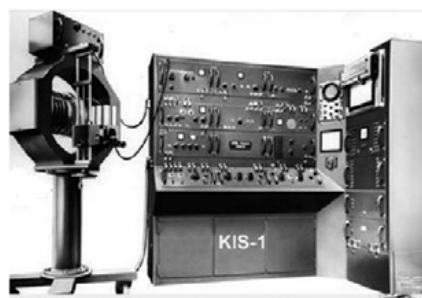
Luncheon Talk by Kurt Wüthrich, 2002 Nobel prize laureate in chemistry, August 7, 2014

To expand economies and better the lives of their citizens, Thailand and most emerging countries in Southeast Asia follow a knowledge-based strategy, where scientific research and innovation play a key role. Academic performance and degrees have become measuring gauges in these societies. Are emerging nations on the right track by pushing their kids



through weekend tutoring classes and sending them to the west, in the hope that this will produce creativity and economic success? Is western innovation and Nobel Prize winning the way to a happy life? Kurt Wüthrich is the right scientist to address these issues. As you find out by reading his biography, http://www.nobelprize.org/nobel_prizes/chemistry/laureates/2002/wuthrich-bio.html

Kurt Wüthrich is a people's man who grew up on a farm in western Switzerland. He went through regular Swiss education like every other citizen, including many of us expatriates in the Swiss-Thai community. In those times the worries were more on winning the next football game, catching a big fish from the neighboring river, rather than studying for the next math exam. In short, a regular Swiss, whose passion for nature provided the energy for hard work in scientific discovery. His down-to-earth approach is evident when he lectures about proteins, the molecules of life which are the basis of Kurt Wüthrich's fame. Taking off his belt, which normally functions as pant holder, to explain the folding and spiraling of amino acids and then to remark that this belt has gotten longer over time (as it does for many of us) at the same rate as



KIS-1, Magnetic Resonance Spectrometer 1963

the size of the protein structures solved by using Magnetic Resonance, shows the unconventional ways Kurt Wüthrich walks. Therefore his luncheon presentation will be understandable for a general audience i.e. it will be non-technical, focusing on the impact of scientific discovery and excellence on daily life. It may be useful, however, to have at least a basic picture of the nature of Kurt Wüthrich's achievements.

In the 1960's, Magnetic Resonance has been used by few organic chemists to determine the chemical structure of small organic molecules. At the time the instruments were driven by vacuum tubes and one needed chemistry, physics and engineering backgrounds just to operate the systems. Vision, stamina and persistence were needed to apply this technology to bio-molecules, at a time when the fields of biology and chemistry were still widely separated. Kurt Wüthrich has accomplished to use Magnetic Reso-



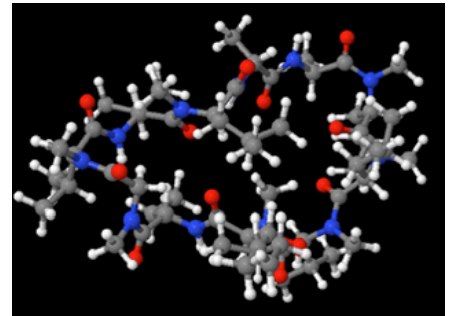
MEMBER CONTRIBUTION

nance to determine the three-dimensional structures of proteins and other “molecules of life”. In our daily lives we know Magnetic Resonance as MRI (Magnetic Resonance Imaging) from the hospital’s radiology departments. Kurt Wüthrich has used this special tool to generate pictures of proteins. This makes it possible to look inside the proteins. Have we ever wondered why a headache disappears after swallowing a tablet of paracetamol? There is interaction between the drug molecule and our body. Very likely the drug molecule docks onto a protein which may then switch off pain signals to our sensory

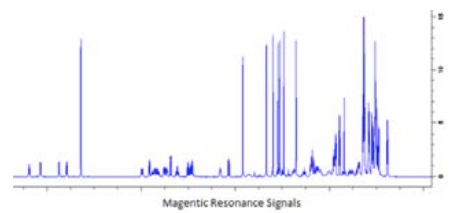
system. These processes are very complex, and the understanding of the three-dimensional structures of proteins helps to gain new insights as a basis for fighting diseases. Understanding biochemical pathways is necessary to develop new drugs and medical procedures. With this in mind, Kurt Wüthrich has driven the field of protein structure determination with Magnetic Resonance over nearly 50 years.

We are very excited that Kurt Wüthrich has accepted the luncheon invitation on August 7, 2014. Friends, members, mark this date in your calendars. Venue and

registration details will be announced in the next newsletter.



3D molecular structure



Magnetic Resonance Signals



Koh Chang



Evangelische Gemeinde deutscher Sprache mit neuer Adresse

Nachdem schon die Deutschsprachige Katholische Gemeinde eine neue Adresse in Bangkok hat, wird auch die Evangelische Gemeinde deutscher Sprache ein neues Gemeinde- und Pfarrhaus beziehen.

Die Adresse ab Juni 2014 lautet:

Nr.125/1 Soi Sitthi Prasat, Rama IV Road, Thung Mahamaek, Sathorn, Bangkok 10120

(Nähe MRT Station Lumpini).

Die Telefonnummer (mobil) +66 (0) 8 1815 9140 und die E-Mail Adresse ev.kirche.th@gmail.com bleiben unverändert.

Die Gottesdienste der evangelischen Gemeinde finden vom 15. Juni 2014 an um jeweils 11 Uhr im Gemeindehaus in der Soi Sitthi Prasat statt; der letzte Gottesdienst im Gemeindehaus in der Pridi Phanomyong wird der Konfirmationsgottesdienst am 1. Juni 2014 um 10 Uhr sein.

Mit herzlichem Gruß

Ulrich Holste-Helmer, Pastor

Annegret Helmer, Pastorin



**Evangelische Gemeinde
Deutscher Sprache
in Thailand**

Pastorin Annegret Helmer
Pastor Ulrich Holste-Helmer

Mobil: +66 (0) 8 1815 9140
E-Mail: ev.kirche.th@gmail.com
Internet: www.die-bruecke.net

**Deutschsprachige
Katholische Gemeinde
in Thailand**



Pfarrer Jörg Dunsbach

Mobil: +66 (0) 8 11 58 98 12
Email: post@gemeinde-bangkok.com
Home: www.gemeinde-bangkok.com

Herzlich willkommen!

Regelmäßige Gottesdienste:

am ersten und dritten Sonntag im Monat
um 11 Uhr im Gemeindehaus Bangkok
125/1 Soi Sitthi Prasat, Rama IV (Nähe MRT Lumpini)

am zweiten und letzten Sonntag im Monat
um 11 Uhr im Begegnungszentrum Pattaya
Naklua Road, zwischen Soi 11 und Soi 13

Regelmäßige Gottesdienste:

sonntags um 10.30 Uhr
in der Kapelle des St.Louis Hospitals Bangkok,
Sathon Road (Nähe BTS Surasak)

am ersten Samstag im Monat um 11 Uhr
im Redemptoristenzentrum Pattaya
Kapelle neben der Lobby, Sukhumvit Road



ทุกหยด...คือคุณภาพที่ทุกคนรอคว้าใจ

น้ำดื่มแบรนด์ระดับโลก พร้อมส่งตรงถึงบ้าน และสำนักงาน

โทร. **02-789-9090**

บริการส่งในเขตกรุงเทพฯ และปริมณฑล

พจนฉนวนกันไฟ ฝาปิดอัจฉริยะ SMART CAP ไร้ทุกระกที่เป็สยบเกลสอน
ไม่จำเป็นต้องใช้มือสองที่นำขวดเพื่อเติมน้ำทาคะอะนอทุกสลด



ดื่มสะดวกขึ้น



เปิดปิดสะดวกขึ้น



ปิดฝาอัตโนมัติ PureLife 8 ลิตร



ขนาด 18.9 ลิตร

